

# A voyage into lands of enduring legacies

Western Europe, the Mediterranean  
and the Red Sea

2024

# See what others don't

Some people see things as they are, others look further. Let us take you on a journey, that will change the way you see the world. Sail to some of the most incredible, remote destinations on the planet. When you travel with us, the wonders of the world take on a richer hue.



Celsus Library in Ephesus, Turkey

## Over 70 years of cruise expertise

That's how long we've been navigating the world's waters. Swan Hellenic is built on a passion for exploration, a reputation for safety and professionalism of the highest standard.

## Boutique ships

Just you and nature, that's how you'll feel on our 5 star contemporary Scandinavian inspired ships. With open-plan design, panoramic views and a focus on wellness, they're the perfect place to relax, recharge and explore.

## Intuitive service

When it comes to anticipating your needs, no request is too big or too small. To us, personal and unobtrusive service means everything from making sure you're fully equipped for an Arctic excursion to remembering your favourite gin serve when it comes to pre-dinner drinks.

## Enriching cultural expeditions

Once, we travelled to educate – professors, scientists, researchers. Over the years, we've developed a deep knowledge of the world. Today, we use this knowledge to create immersive cultural experiences that take you to the heart of a place.

# A culture of care for people and planet

Swan Hellenic has always been passionate about our planet's rich environmental and cultural heritage. It's in our name and nature, and it's what inspires us to experience the world's wild unspoilt places and explore its rich and diverse cultures, ancient sites and civilisations.

Aerial top down view of a fish farm in the blue, mediterranean sea in Greece



## Equality, Diversity & Inclusion

Dynamically inclusive companies and societies are key to sustainable development. As the pioneer of cultural expedition cruising, we welcome adventurers of every age, gender, orientation, nationality and interest to explore worldwide. We promote gender equity and women and girls' empowerment worldwide, and have strong internal policies that ensure our employees enjoy equal opportunities of employment and professional development, irrespective of gender, ethnicity, culture, religion, age, sexual orientation, functional ability and political view.

### Proud member of



### Our focus areas

Swan Hellenic's sustainability policies are fully compliant with and exceed the cruise industry global standards governing its safety, environmental and labour aspects. In line with the UN sustainable development goals, we are focusing on the following 6 key areas.

### Responsible Cruising

We are committed to preserving the beauty of the world we explore for future generations, taking urgent and innovative concrete action to reduce our environmental footprint.

### Climate Action

Exploring the globe, we constantly encounter dramatic evidence of global warming and climate change. This strengthens our resolve to take urgent action - within our organisation and in the destinations we travel to - to combat their causes and mitigate their effects.

### Life in the Water

With our strong seafaring heritage, we are committed to the responsible use of marine resources for sustainable development. This is vital in promoting and conserving the health and biodiversity of the Earth's waters.

### Legacies of the Land

We strive to preserve the natural and cultural landmarks that our expedition cruises explore, promoting and advancing the conservation, restoration and sustainable use of terrestrial ecosystems and historic sites for future generations.

### Thriving Communities

We build strong connections with the communities that host our cultural expedition cruises, respecting their cultural and environmental integrity, while partnering with them to generate positive impacts.

### Quality Education

Education and research empower human potential. Proud of our roots in British academia, we work to support regional research initiatives, ensuring access to inclusive and equitable education and providing lifelong learning opportunities for all.

# Exploring with head and heart

Swan Hellenic pioneered cultural expedition cruising in 1954, when we accompanied members of the Hellenic Society around the famous sites of ancient Greece in the company of eminent classicists.

Ruins of Seleukeia Pamphylia Lyrbe, Greece

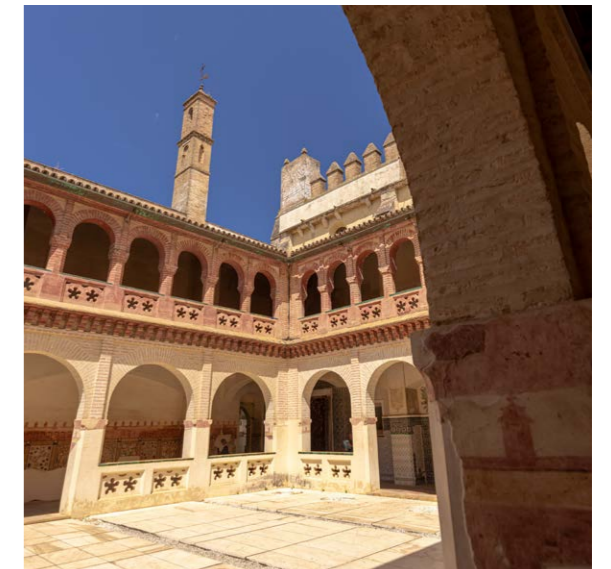


## Explore

Every Swan Hellenic cruise is the same today as it always was, combining geographical exploration with cultural and scientific discovery. We don't just take you to explore the most extraordinary places on earth. We bring you the company of like-minded people and renowned experts, who offer eye-opening lectures and are on hand for informal questions and discussion throughout your cruise.

## Experience

So when you choose Swan Hellenic to see what others don't – you can be sure you'll do so with a full perspective and real insight into the history, cultures, wildlife, flora, geology and geography of the place. Briefings before each disembarkation and recaps afterwards supplement our lectures and talks, stimulating a relaxed social environment that encourages the sharing of experiences.



## Enrich

At the same time, every Swan Hellenic cruise is also full of opportunities for you to develop your creative passions, with professionals on board to support you in photography and more. A library completes the picture, with a multitude of books on every subject, for you to take your interests to another level.

It's the depth of these other dimensions that's unique to Swan Hellenic, making us the first choice of adventurous minds worldwide.

# Learn from the best

Renowned in their respective fields, our onboard experts have an unparalleled understanding of the regions we visit.

From historians to naturalists, meteorologists to ornithologists, our friendly experts will offer you incredible insight into the wildlife, history and geology of the places we visit. Tap into their expertise via our extensive lecture programme, or feel free to interact with them throughout your trip. We're also fortunate to work with some of the best in-country guides in the industry. Born and raised in the regions we visit, nothing quite compares to the depths of their local knowledge.

Mount Etna eruption, Sicily



The monastery of Nea Moni in Chios Island, Greece



## Botanists

Identify plant life at sea and on land with our expert botanists, and get insights into our ecosystems and climate.



## Geologists

Everyone loves a beautiful landscape. But understanding its geology and how it was formed will change your perspective forever.



## Photographers

Chat to our expert photographers and learn how to best capture movement and light in the extraordinary destinations we visit.



## Archaeologists

Join our archaeologists and discover what lies beneath our feet. Uncover lost cities and ancient civilisations that shaped our history.



## Historians

Our historians will enrich your expedition experience with incredible stories and unmatched knowledge of the places we visit.



## Ornithologists

Will you be lucky enough to spot a snow petrel? Learn from our ornithologists and be inspired to identify the incredible birds you'll see.



## Marine Biologists

As you encounter whales, dolphins and other marine species, you can consult our marine biologists for fascinating anecdotes.



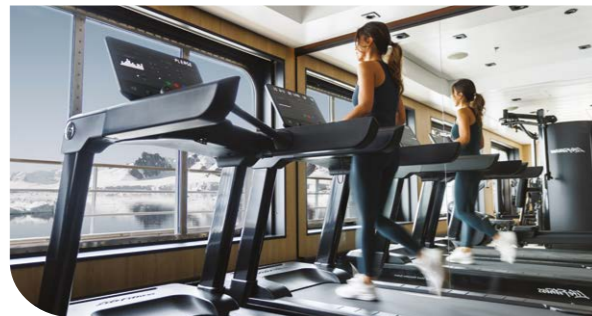
# Endless ways to spend your day

There's no such thing as a typical day with Swan Hellenic. We bring you endless possibilities to tailor every moment to your interests and mood, so you'll always have your dream day on board.

Plan your perfect day

## 6am

Waking comfortably refreshed in your stateroom, early risers can join the team on deck for an early morning breakfast. Breathe in the Mediterranean sea air as you sip your fresh tea or coffee. What a wonderful way to prepare for the day's adventures exploring a treasure trove of history and ancient sites.



## 7am

Early risers have the time to take a fitness class or workout in our gym. Refuel with a light continental or substantial cooked breakfast - a perfect foundation for the action-packed day ahead.

## 8am

Prepare yourself for today's shore excursion as we disembark at one of our preferred, off-the-beaten track, Mediterranean ports, many of which are only accessible to smaller cruise ships. Our expert-led cultural tours will take you to long-forgotten settlements or wondrous archaeological sites where the ancient cultures of Mediterranean Europe come to life.



## 12pm

Back on board, you'll have the time to share experiences over lunch, whether snacking in the Club Lounge or savouring something a little more substantial in the Swan Restaurant or Pool Bar & Grill.



## 2pm

There may be time after lunch for another shore excursion at our current port of call. Delve into local culture or uncover more archaeological sites and immerse yourself in the long, complex history of the Mediterranean.

## 4pm

Indulge in our High Seas High Tea, or retreat to the comfort of your stateroom for a movie on your flatscreen TV. Sweat it out in our stunning panoramic sauna, take a dip in the pool, take a mindfulness class, or pop to the salon for a relaxing treatment.



## 6.30pm

Each evening a member of our expert team or a guest lecturer will talk you through the day's highlights. We will then discuss the shore excursion plans for the following day.

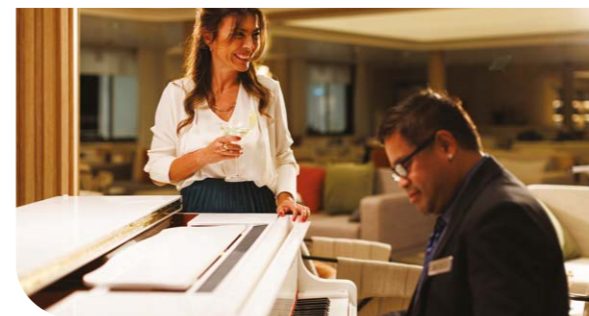
## 7pm

It's now time to enjoy the pleasures of elegant dining. Our chefs have prepared a selection of international culinary delights, expertly paired with wines selected by our sommelier.



## 9.30pm

End a perfect day with your favourite drink and a wonderful piano performance. Or head out to the deck for some stargazing under the clear night sky.



# All-inclusive experience

We've taken care of the finer details, allowing you to focus your full attention on your cultural expedition cruise experience. Our cruise fares are all-inclusive, so there are no surprise extras or unexpected gratuity bills. Relax in the full knowledge that all you have to do is have a wonderful time.

- Group transfer from the airport to the hotel the day before embarkation, from the hotel to the cruise port on embarkation day and from the cruise port to the airport on disembarkation day
- One night pre-cruise accommodation with breakfast in a 4/5-star hotel or onboard
- All meals onboard
- Onboard accommodation in a stateroom selected category
- 24-hour room service
- Coffee, tea, soft drinks and selected alcoholic beverages available 24-hours per day
- Lecture programmes by our experienced guest speakers
- One selected shore excursion per port of call
- Standard WiFi
- Onboard gratuities & port taxes

## Enhance your experience

You also have the option of adding some extra special services to your cultural cruise experience (additional charges apply):

- Air fares (unless otherwise stated)
- Travel insurance
- Optional land programmes and hotel accommodation pre or post cruise
- Premium and private shore excursions
- Premium alcoholic beverages
- Spa & beauty treatments
- Laundry services
- Retail shop purchases



Corinth channel in Greece

# Our Cultural Expedition Cruises

Western Europe, the Mediterranean, and the Red Sea hold tremendous historical and cultural significance, shaping civilization and the modern world through their interconnections, trade, conquests and cultural exchange. These regions have witnessed the rise and fall of empires, including the Phoenicians, Carthaginians, Egyptians, Greeks, Romans, and Byzantines, the birth of religions, the exploration of distant lands, and the flourishing of philosophy, arts and sciences. Exploring their sites and landmarks reveals a wealth of knowledge, enriching our understanding of human history.

Embark on a captivating journey through the historic ports of Western Europe, which served as gateways to voyages of discovery. Sail along the North African coast and uncover the enduring influence of ancient civilizations. Cruise around the Red Sea visiting the remarkable legacies of Egypt, Jordan and Saudi Arabia. From the ancient Greeks and Romans to intrepid European explorers who ventured far and wide, this region weaves together a captivating tapestry of languages and a historical odyssey that encompasses remarkable human achievements.

ITINERARY	FROM	TO	SHIP	DURATION	SAILING DATES
OLD WORLD GATEWAYS TO THE ATLANTIC	Lisbon	Portsmouth	SH Vega	10 nights	14 May 2024
GEMS OF WESTERN EUROPE	Amsterdam	Lisbon	SH Diana	9 nights	1 Aug 2024
MYSTERIES OF CARTHAGE AND THE MOORS	Lisbon	Palermo	SH Diana	10 nights	10 Aug 2024
SECRETS OF SICILY	Palermo	Palermo	SH Diana	8 nights	20 Aug 2024
FROM MAGNA GRAECIA TO GREECE	Palermo	Piraeus	SH Diana	8 nights	28 Aug 2024
COLORS OF EASTERN MEDITERRANEAN	Piraeus	Istanbul	SH Diana	11 nights	5 Sep 2024
CULTURES OF EAST MEDITERRANEAN	Istanbul	Port Said	SH Diana	10 nights	16 Sep 2024
GEMS OF THE RED SEA	Limassol	Jeddah	SH Diana	11 nights	26 Sep 2024



# Mediterranean Culture



Arch of Trajan in Timgad, Batna, Algeria.



## Italy

The seat of the Roman Empire, Italy is renowned for its world-class food, fine wine, fashion and football. But delve beneath the surface and you'll find an abundance of unexpected wonders. From Trapani's biodiverse salt pans to the Valley of the Temples, an ancient architectural wonder, Italy is a treasure trove of cultural and natural marvels.



## Greece

More than just a pretty face with its endless coastlines, white-washed buildings and balmy seas, Greece is the place where mythology and ancient history intertwine. Contemplate the seemingly impossible architecture of Athens's Parthenon, marvel at Delos Island's archaeology or follow in the footsteps of ancient pilgrims at the Temple of Artemis.



## Turkey

The meeting point of Europe and the Middle East, Turkey is richly historical and home to a striking diversity of cultures. Explore Greco-Roman Ephesus, the best-preserved ancient city in the Mediterranean, tour Istanbul's centuries-old Blue Mosque or indulge in Turkey's culinary history with meze and baklava accompanied by a glass of traditional çay.



## Cyprus

From neolithic settlements to the remains of once mighty kingdoms, sun-soaked Cyprus is home to some fascinating archaeology. Often referred to as the 'Island of Love', Aphrodite, the Greek goddess of love and beauty was once worshipped here. Today she can be honoured at the ruins of the Sanctuary of Aphrodite, a UNESCO World Heritage Site.



## Tunisia

The Arab-speaking world's most liberal sovereignty, compact Tunisia punches well above its weight with its cultural offerings. Just outside of Tunis, the ancient city of Carthage was once the heart of the Phoenician trade network. Tunis's Bardo Museum houses the largest collection of Roman mosaics in the world. Here, the distant past is never far away.



## Algeria

Since its Phoenician foundations in 900 BC, the Romans, Vandals, Byzantines, Muslims, Spanish, Ottomans and the French have all laid their claim on this land. The result is a magnificent blend of Islamic architecture, European-influenced culture, ancient fortresses and vast, perfectly preserved Roman sites.

# Mediterranean Wonders



Church of Agios Nikolaos, Island of Lemnos, Greece



## History

From the Phoenicians and Greeks to the Romans and the Ottomans, the shores of the Mediterranean have given birth to many of history's legendary civilisations. They have also witnessed epic battles and seen the rise and fall of powerful empires – all culminating in a fascinating past that has intrigued curious travellers for centuries.



## Archaeology

The Mediterranean is the best open-air museum in the world, with archaeological sites that showcase its rich and complex history. From Malta's historical capital, Valletta and Algeria's perfectly preserved Roman towns, to Turkey's ancient city of Ephesus, exploring the archaeological gems of the Mediterranean will transport you back to antiquity and beyond.



## Architecture

For over 3,500 years the architects of the Mediterranean competed in making their buildings more durable, more beautiful, and increasingly elaborate. The Parthenon in Athens and the Valley of Temples in Sicily are just a few of the incredible feats of ancient architecture that never fail to leave visitors in complete awe.



## Landscape

Beautiful shorelines and shimmering blue waters are synonymous with the Mediterranean. And whilst it's true that you can find some of the world's most stunning beaches here, the rest of the region's varied and diverse landscapes also have much to offer. Pristine forests, coastal wetlands, semi-arid steppes and smouldering volcanoes all wait to be discovered.



## Wildlife

Although the Mediterranean covers less than 1% of the world's ocean surface, it holds 1 in 10 of all known marine species, of which 28% are found nowhere else on earth. With the help of our onboard experts, we'll search for the many species of dolphins, whales, porpoises, sharks, turtles and more that call these abundant waters home.



## Cuisine

Prepare your tastebuds for an epic culinary journey as you sample some of the world's most beloved dishes straight from the source. From Sicily's world-famous cannoli and traditional Greek moussaka to the spicy aromas of the North African tagine, tasting your way across the Mediterranean is a pleasure like no other.

# Old World Gateways to the Atlantic

FROM LISBON TO PORTSMOUTH

🕒 14 – 24 May 2024 📍 Lisbon – Portsmouth 🗓️ 10 nights 🚢 SH Vega

Starting from  
€7,528 pp\*



## HIGHLIGHTS

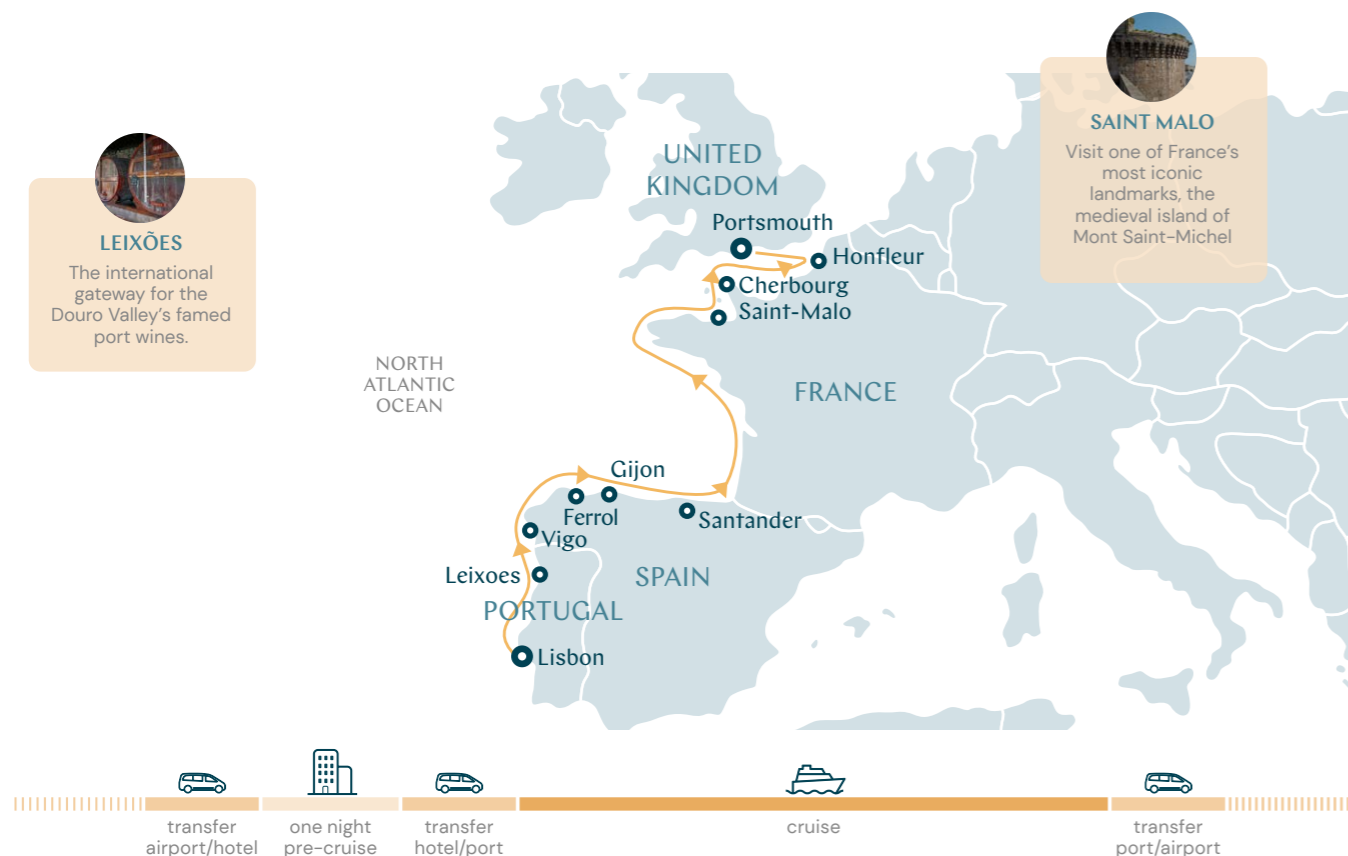
- Explore the old streets of Gijón's fisherman's quarter, Cimadevilla.
- Admire the ship-shaped Frank Gehry-designed Guggenheim Museum Bilbao.
- Wander the steep cobbled streets of the medieval hamlet and holy island of Mont St Michel.
- Explore one of Brittany's most beautiful port cities: Concarneau.

Day	Visiting
1	Lisbon
2	Leixoes
3	Vigo
4	Ferrol
5	Gijón
6	Santander
7	At sea
8	Saint-Malo
9	Cherbourg
10	Honfleur
11	Portsmouth

Ports, port order and itinerary duration may vary, for the most up-to-date details see swanhellenic.com

\*Price based on Ocean View cabin category

This maritime odyssey takes you from Lisbon, one of Europe's oldest cities, to Portsmouth, one of the world's best-known ports whose history can be traced to Roman times. Along the way, discover old towns and medieval walled cities with steep, narrow streets and ramparts, fisherman's quarters, long stretches of sand, and exotic gardens. Journey with us on our boutique expedition ship and enjoy everything this little slice of Western Europe offers.



# Gems of Western Europe

FROM AMSTERDAM TO LISBON

🕒 1 Aug – 10 Aug 2024 📍 Amsterdam – Lisbon 🗓️ 9 nights 🚢 SH Diana

Starting from  
€8,143 pp\*



## HIGHLIGHTS

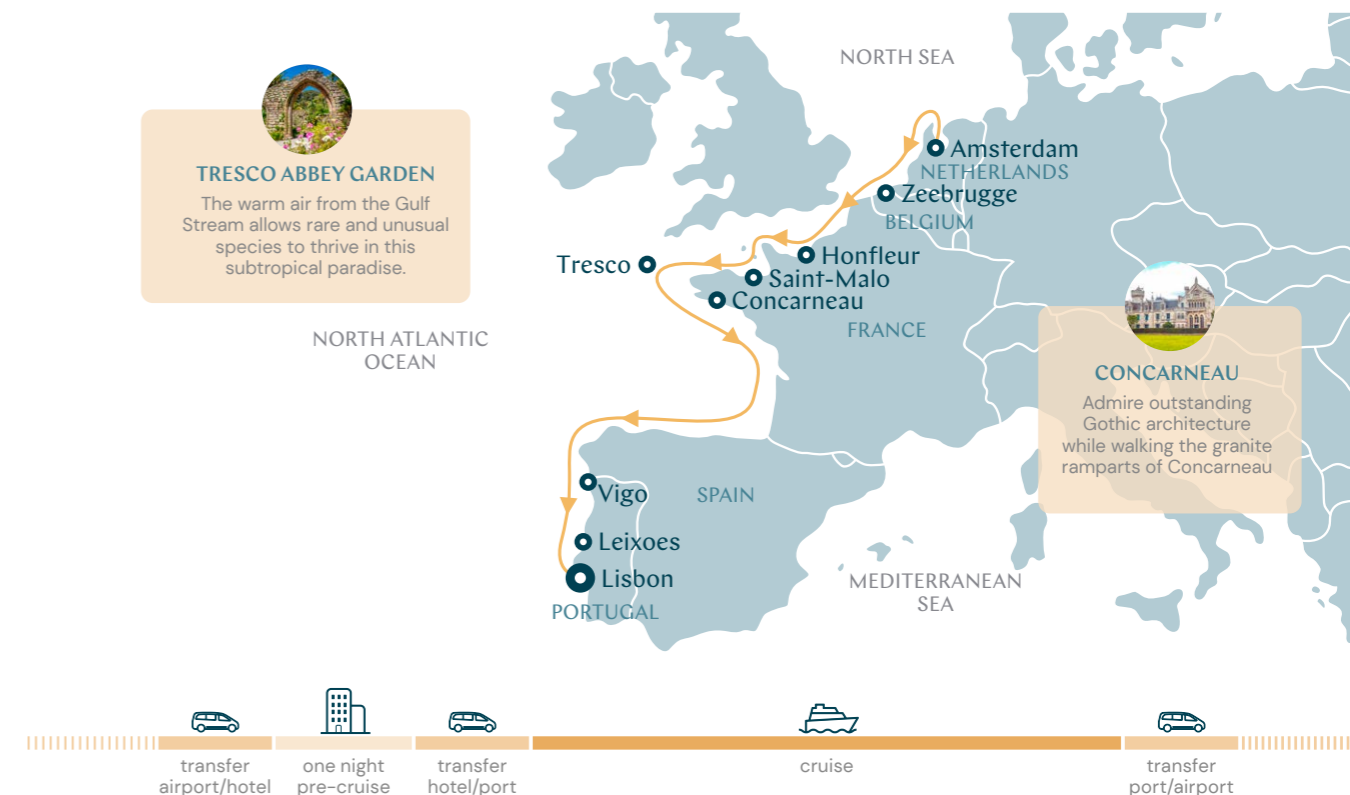
- Wander the beautifully preserved medieval streets of Bruges, often referred to as the 'Venice of the North'
- Follow in the footsteps of French artists Claude Monet and Paul Gauguin in Brittany and Normandy
- Marvel at the magnificent Cathedral of Santiago de Compostela, believed to be the burial site of James the Great

Day	Visiting
1	Amsterdam
2	Bruges
3	HonFleur
4	Saint-Malo
5	Tresco, Scilly Islands
6	Concarneau
7	At sea
8	Vigo
9	Leixoes
10	Lisbon

Ports, port order and itinerary duration may vary, for the most up-to-date details see swanhellenic.com

\*Price based on Ocean View cabin category

Follow in the footsteps of sailors, royals and artists, as you cruise the English Channel from the Netherlands to Belgium before exploring the Atlantic coasts of France, Spain and Portugal. This exploration of Western Europe on board our boutique ship carries you between two European capitals, from the flat canal side streets of Amsterdam to the hilly alleyways of Lisbon. Along the way, discover Roman lighthouses, gaze upon sandy beaches and feast on seafood. Sit back and enjoy this leisurely voyage taking in the fishing villages, ancient ports, fortified medieval towns and picturesque harbours that attracted renowned artists including Monet and Boudin.



# Mysteries of Carthage and the Moors

FROM LISBON TO PALERMO

🕒 10 – 20 Aug 2024 📍 Lisbon – Palermo 🗓️ 10 nights 🚢 SH Diana

Starting from  
€8,886 pp\*



## HIGHLIGHTS

- Browse the bustling Arab-influenced street market stalls of Palermo
- Visit a colony of endangered barbary macaques in Bejaia's Gouraya National Park.
- Get lost in the whitewashed, steep, winding alleyways of the Kasbah medina in Algiers

Day	Visiting
1	Lisbon
2	Portimao
3-4	Seville
5	Tangier
6	Oran
7	Algiers
8	Bejaia
9	Annaba
10	La Goulette
11	Palermo

Ports, port order and itinerary duration may vary, for the most up-to-date details see swanhellenic.com

\*Price based on Ocean View cabin category

Departing Lisbon, settle in for a historical odyssey of Portuguese, Spanish, north African and Italian coastal gems on our journey along the North African Coasts aboard our boutique ship. On this specially curated voyage you have time to roam North Africa's most beguiling souks and medinas, from the French influences of Annaba to Oran's complex past. In Tunisia, explore the remains of the ancient city of Carthage. Conclude this intrepid journey in Sicily, a cultural melting pot offering up centuries of history of Middle Eastern, Northern African and European influences all melded together.



# Secrets of Sicily

SICILY ISLAND

🕒 20 Aug – 28 Aug 2024 📍 Palermo – Palermo 🗓️ 8 nights 🚢 SH Diana

Starting from  
€7,401 pp\*



## HIGHLIGHTS

- Visit the tomb of Archimedes in Siracusa's necropolis
- Uncover the Valley of the Temples, a UNESCO World Heritage site
- Explore one of the world's most concentrated historic areas in Valletta, Malta's capital city

Day	Visiting
1	Palermo
2-3	Trapani
4	Porto Empedocle
5	Valletta
6	Siracusa
7	Giardini Naxos
8	Lipari
9	Palermo

Ports, port order and itinerary duration may vary, for the most up-to-date details see swanhellenic.com

\*Price based on Ocean View cabin category

Discover the heart of the Mediterranean on this fascinating Sicilian and Maltese cultural cruise. Sicily is a wonderful concoction of rich history, culinary delights, vibrant culture and striking natural landscapes. This alluring Italian gem has much to offer from bustling Palermo, glamorous Taormina and the intriguing Valley of the Temples to the Salt Pans of Trapani. The nearby islands of Lipari, the largest of the Aeolian Islands, and Malta, add more archaeological finds to help unearth the complex histories these lands have witnessed.



# From Magna Graecia to Greece

FROM PALERMO TO PIRAEUS

28 Aug – 5 Sept 2024 | Palermo – Piraeus | 8 nights | SH Diana



Remains of Ancient Greek temple of Athena in Delphi

Embark on a captivating journey through time on this inspirational voyage. Minoans, Ancient Greeks, Carthaginians, Romans, Venetians, and Turks have all laid claim to these lands leaving behind a rich legacy of history and architecture. Aboard our small 5-star cultural cruising ship, you'll begin your historical journey in the vibrant, multicultural city of Palermo in Sicily and discover some of the best preserved Ancient Greek ruins outside of Greece. Next, we'll explore Lipari's volcanic landscapes before visiting Stromboli's – one of the world's most active volcanoes. Continue through the historic coastal towns and paradisaical beaches before reaching Piraeus – your gateway to Athens' ancient wonders.

Starting from  
€7,401 pp\*

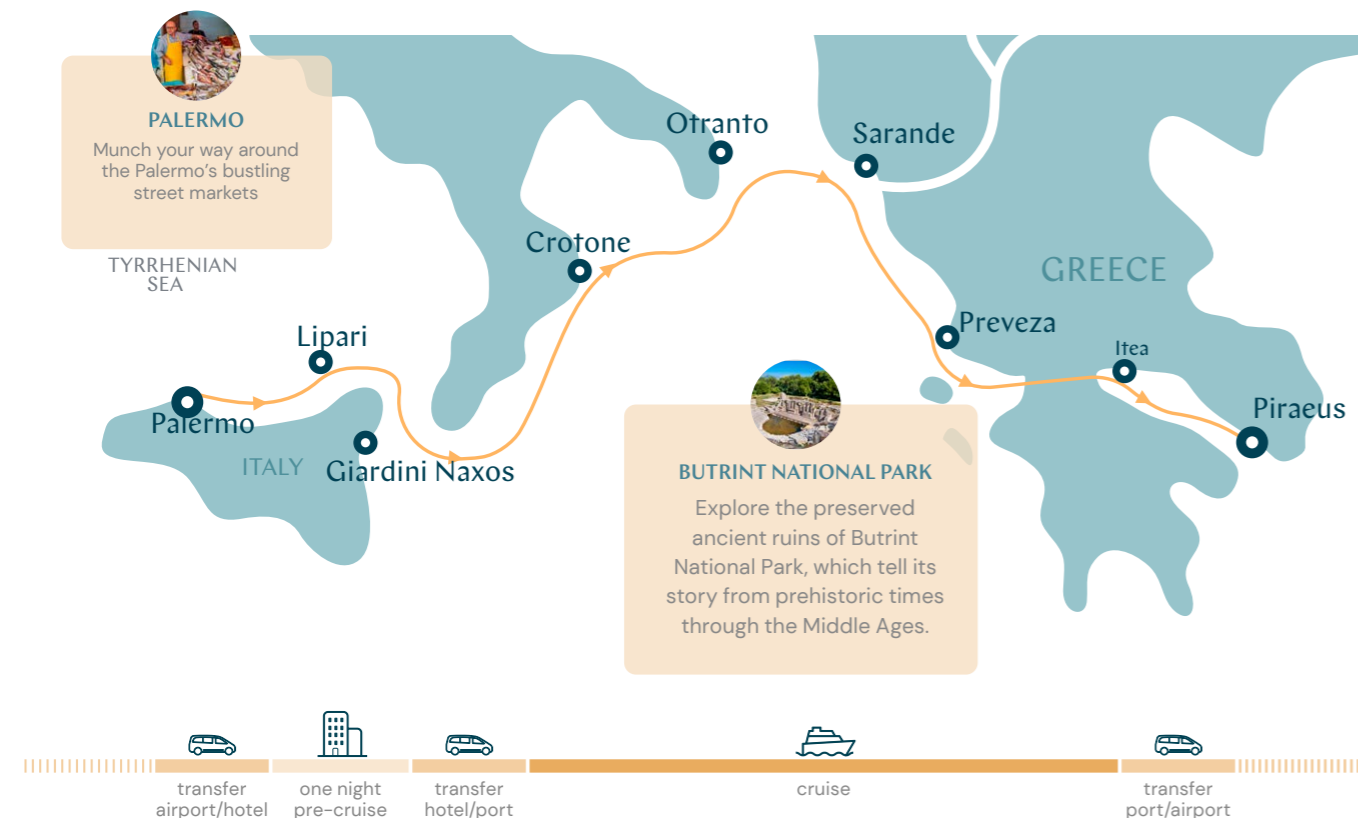
## HIGHLIGHTS

- Delve into the rich history of Magna Graecia at southern Italy's Capo Colonna Archaeological Park.
- Explore the archaeological remains of Nikopolis, originally founded by Roman Emperor Octavian in commemoration of his victory in the Battles of Actium.
- Visit Delphi, a UNESCO World Heritage site known for its rich archaeological treasures and deep historical significance.

Day	Visiting
1	Palermo
2	Lipari
2	Cruising Stromboli
3	Giardini Naxos
4	Crotone
5	Otranto
6	Sarande
7	Preveza
8	Itea
8	Cruising Corinth Canal
9	Piraeus

Ports, port order and itinerary duration may vary, for the most up-to-date details see swanhellenic.com

\*Price based on Ocean View cabin category



# Colors of Eastern Mediterranean

FROM PIRAEUS TO ISTANBUL

5 – 16 Set 2024 | Piraeus – Istanbul | 11 nights | SH Diana



Monemvasia, Greece

Embark on a journey through the magic of the Aegean Sea. From the bustling port of Piraeus to the charming town of Monemvasia and the picturesque island of Milos, this cruise will take you on a journey through some of Greece's most beautiful and historic destinations. As you sail through the Aegean Sea, you'll have the opportunity to explore the ancient ruins of Rethymnon and Chios, stroll through the picturesque streets of Symi and Rhodes, and soak up the sun on the beautiful beaches of Nisyros and Mytilene. And when you're ready to relax and unwind, you can enjoy a leisurely day at sea as you take in the stunning views of the Mediterranean.

Starting from  
€9,629 pp\*

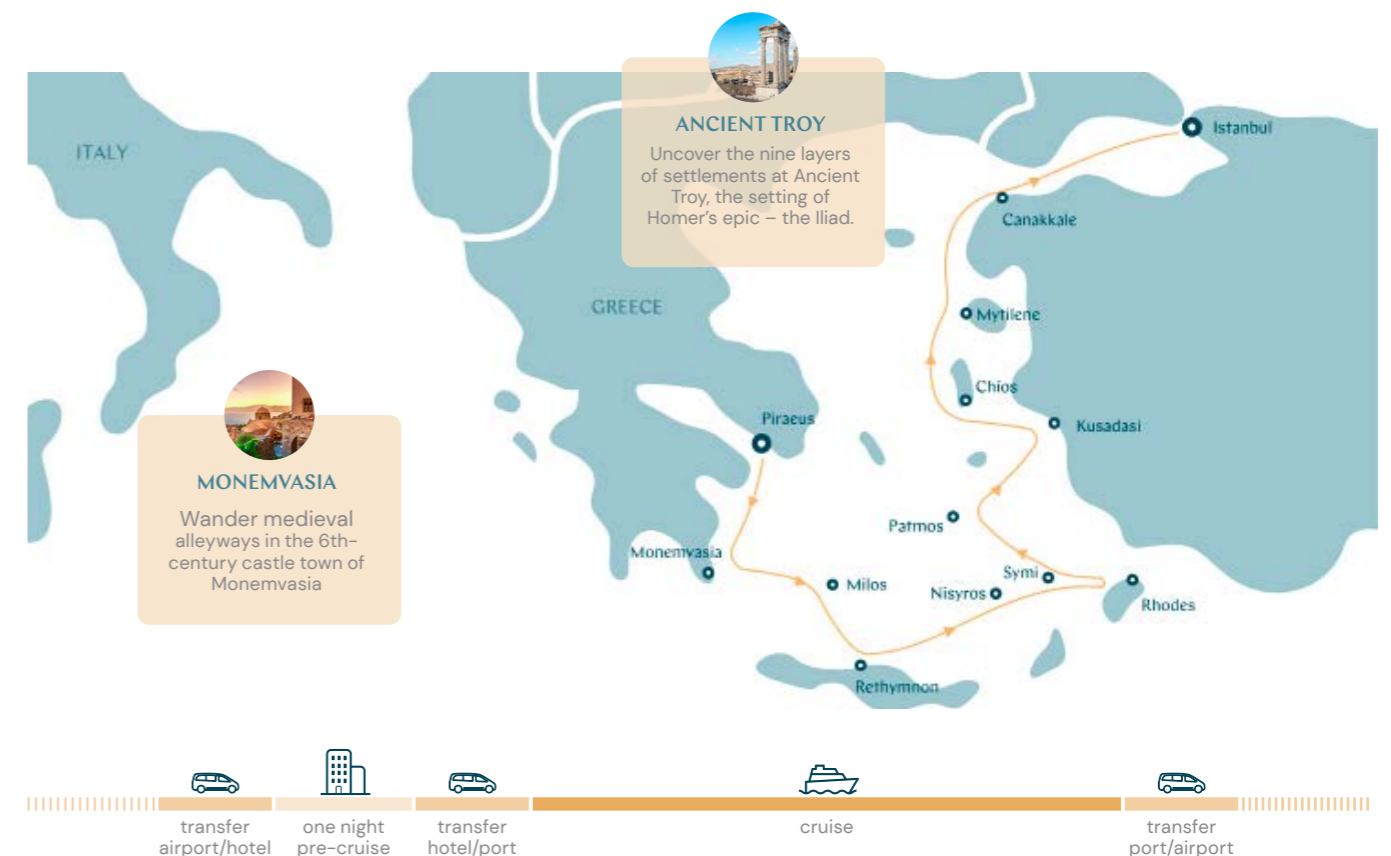
## HIGHLIGHTS

- Enjoy the panoramic drive through orange and olive groves with the mighty Taygetus Mountain in the background.
- Visit the Grand Master's Palace, during the 14th century under the rule of Grand Master H de Villeneuve.
- Uncover Rethymno's multicultural past and explore its picturesque lanes.

Day	Visiting
1	Piraeus
2	Monemvasia
3	Milos, Adamas
4	Rethymnon
5	Rhodes
6	Nisyros
6	Symi
7	Patmos
8	Kusadasi
9	Chios
10	Mytilene, Lesbos
11	Canakkale
11	Cruising Dardanelles
12	Istanbul

Ports, port order and itinerary duration may vary, for the most up-to-date details see swanhellenic.com

\*Price based on Ocean View cabin category



# Cultures of East Mediterranean

FROM ISTANBUL TO PORT SAID

🕒 16 – 26 Sep 2024 📍 Istanbul – Port Said 📅 10 nights 🚢 SH Diana



Chios, Greece

## HIGHLIGHTS

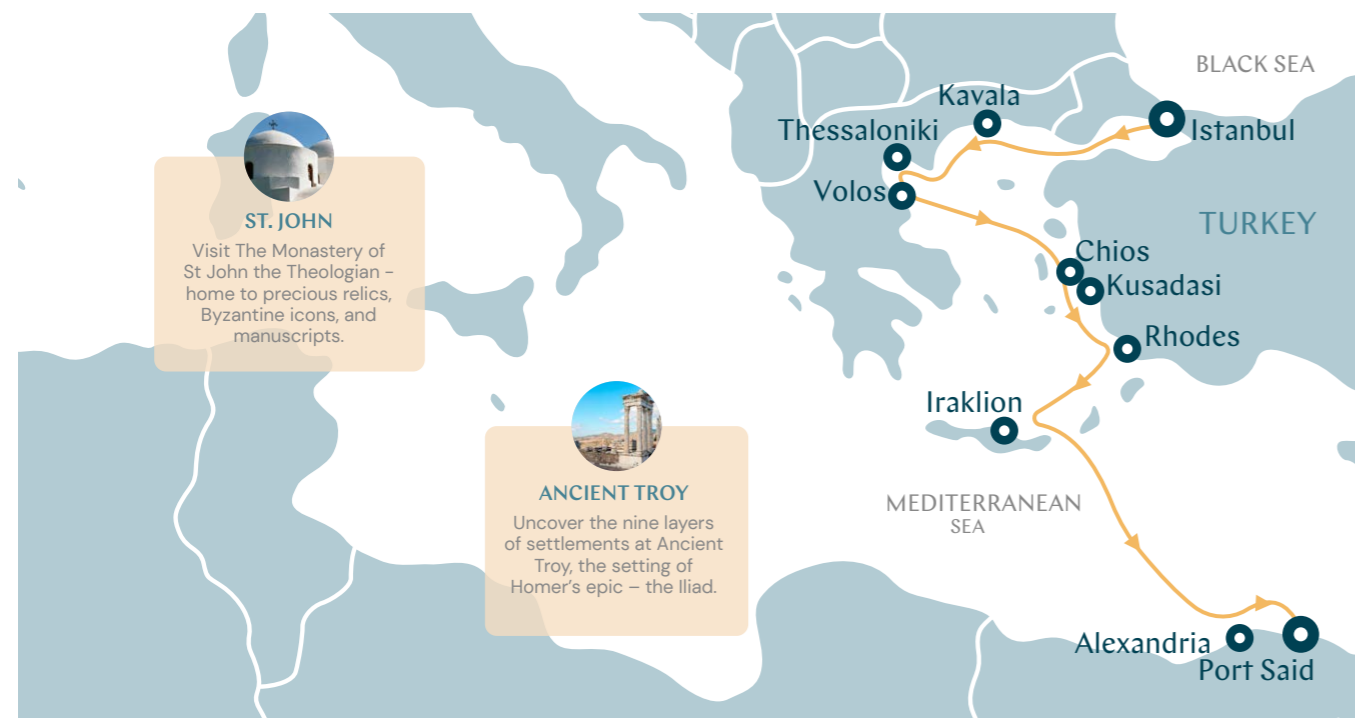
- Visit the Archaeological Museum of Vergina, renowned for its extensive collection of artefacts from the Kingdom of Macedon.
- Enjoy the incredible views while wending up the slopes of Mount Pelion.
- Discover the unique mastic plantations of Chios – a tradition that goes back to antiquity.

Day	Visiting
1	Istanbul
2	Kavala
3	Thessaloniki
4	Volos
5	Chíos
6	Kusadasi
7	Rhodes
8	Iraklion, Crete
9	At Sea
10	Alexandria
11	Port Said

Ports, port order and itinerary duration may vary, for the most up-to-date details see swanhellenic.com

\*Price based on Ocean View cabin category

Experience the magic of the Eastern Mediterranean on this unforgettable voyage. From the bustling streets of Istanbul to the charming port town of Kavala and the vibrant city of Thessaloniki, this cruise will take you on a journey through some of the world's most beautiful and historic destinations. As you sail through the Aegean Sea, you'll have the opportunity to stroll through the picturesque streets of Kusadasi and Rhodes and soak up the sun on the beautiful beaches of Heraklion. And when you're ready to relax and unwind, you can enjoy a leisurely day at sea as you take in the stunning views of the Mediterranean.



### ST. JOHN

Visit The Monastery of St John the Theologian – home to precious relics, Byzantine icons, and manuscripts.



### ANCIENT TROY

Uncover the nine layers of settlements at Ancient Troy, the setting of Homer's epic – the Iliad.



Starting from  
€8,886 pp\*

# Gems of the Red Sea

FROM LIMASSOL TO JEDDAH

🕒 26 Sept – 5 Oct 2024 📍 Limassol – Jeddah 📅 11 nights 🚢 SH Diana



Pyramids of Egypt, Cairo, Egypt

## HIGHLIGHTS

- Discover the exotic marine world the Red Sea is famous for.
- Cruise along the Suez Canal, one of the great feats of Victorian engineering.
- Wander around the ancient old town of Jeddah and admire the modern Saudi architecture.

Day	Visiting
1	Limassol
2-3	Port Said
4	Suez Canal
5	Sharm El Sheikh
6	Aqaba
7-8	Safaga
9	At Sea
10-11	Yanbu
11	Yanbu, Ras Al Baradi Beach
12	Jeddah

Ports, port order and itinerary duration may vary, for the most up-to-date details see swanhellenic.com

\*Price based on Ocean View cabin category

Embark on an epic journey steeped in centuries of history on this Gems of the Red Sea cruise aboard our 5-star boutique ship. Departing from Port Said, spend your first day sailing through the Suez Canal to the Red Sea. You have plenty of time to discover the charms of this legendary sea, from the beauty of swimming in its abundant waters to the intriguing ports of Sharm El-Sheikh, Aqaba and Safaga, and travelling inland to visit ancient sites such as Cairo, Luxor and Petra. Then it's time to call into Saudi Arabia, where we'll drive from Yanbu to the holy city of Medina. Finally, we arrive in Jeddah, Saudi Arabia's jewel.



### PETRA

Completely carved out of the sandstone mountains, the Treasury was built as a tomb for the Nabataean King Aretas III



### LUXOR

Explore the Valley of the Kings, a royal burial ground for pharaohs from the 18th, 19th and 20th dynasties

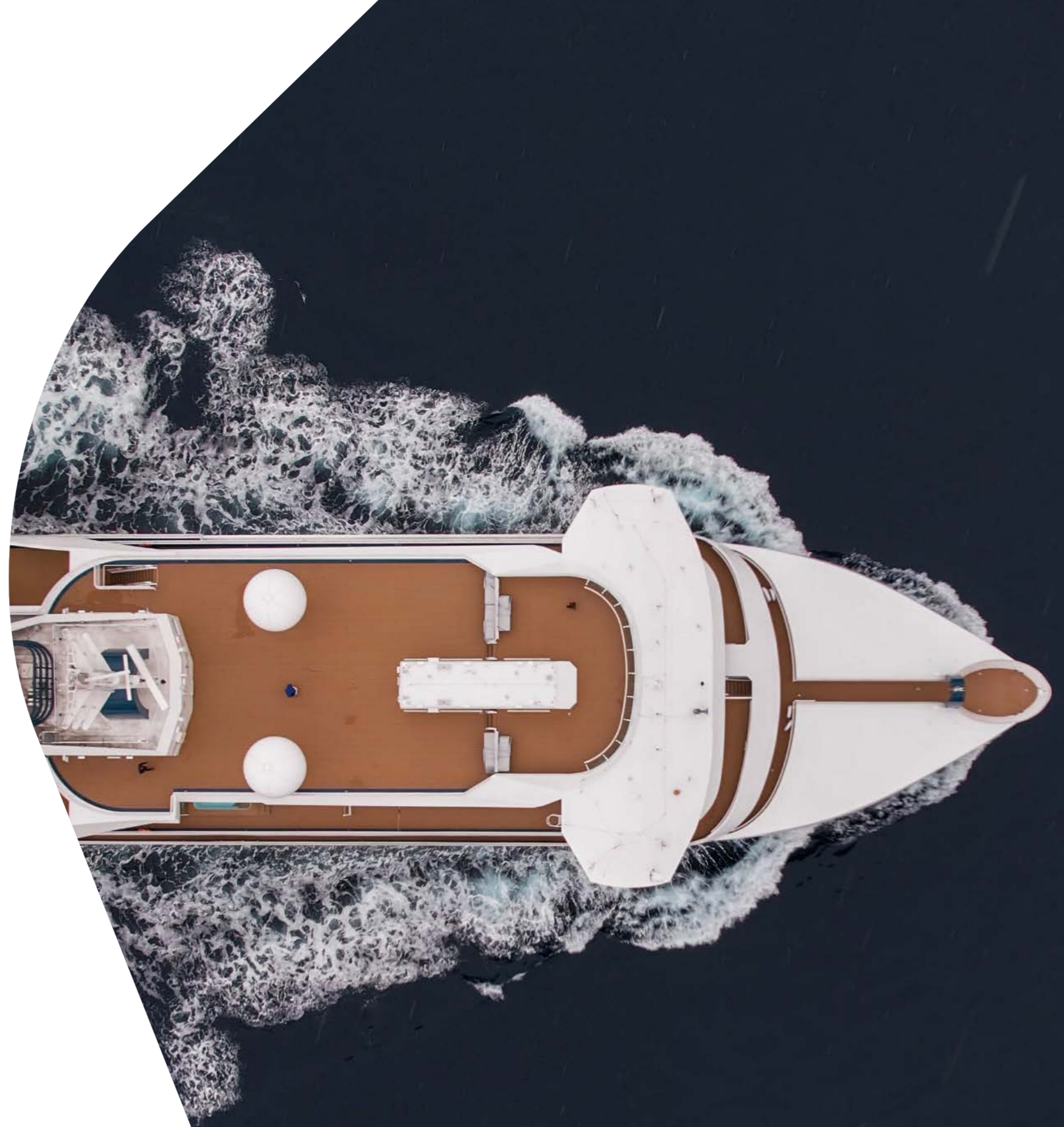


Starting from  
€8,886 pp\*

# A new class of exploration

Immerse yourself in breathtaking panoramic views, elegant interiors, and sophisticated onboard facilities.

Our fleet of 5-star boutique ships — SH Minerva, SH Vega and SH Diana — have taken expedition cruising to new heights. Built in the Helsinki Shipyard in Finland, these ships combine the latest in expedition technology with stylish, sophisticated design. Featuring elegant interiors, wide unobstructed views throughout the ship and dedicated expedition facilities for a remarkable travel experience. Explore off-the-beaten-track destinations in style and comfort as you take in the scenery from a panoramic sauna, warm up in an outdoor hot tub, dine in a world-class restaurant, and unwind in an elegant stateroom. This is boutique cruising at its finest.






SH Vega

# Boutique cruising at its finest




SH Minerva, SH Vega, and SH Diana are sister ships designed to navigate the most inspiring, inaccessible places on earth. All the while offering guests an immersive, 5-star experience.



## SH Minerva & SH Vega

-  120 crew
-  150 guests
-  9 decks

## SH Diana

-  141 crew
-  192 guests
-  9 decks

Our heated outdoor pool

The interiors are spacious and tasteful, with plush furnishing and floor-to-ceiling windows that give you unobstructed views of some of the most incredible landscapes in the world. On board, savour international cuisine imagined by renowned chefs, unwind in a sophisticated stateroom and make full use of state-of-the-art spa, fitness and expedition facilities.



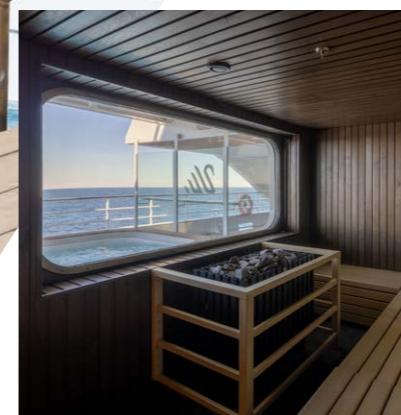
### The Swan Restaurant

As the main venue for breakfast, lunch and dinner, our 152-seat restaurant serves international and local cuisine focussed on quality regional ingredients from the unique destinations we visit.



### Club Lounge

Vibrant and welcoming, The Club Lounge acts as a hub, combining 24 hour tapas inspired dining with panoramic views of the ocean glittering below.



### Sauna with a View

Head to Deck 8 for the best views in the world. After a work out in our state-of-the-art gym, relax in our sauna or jacuzzi and take in those breathtaking vistas along the way.



### Observation Lounge

After a day of exploration, where better to relax than in the Observation Lounge? Sit back, savour your favourite tittle whilst getting to know your fellow guests.



### Alfresco Dining & Heated Outdoor Pool

On Deck 7, you'll find a heated outside pool along with pool side seating from where you can enjoy stunning scenery.



# SH Vega

Our elegant 5-star ships offer a boutique home-from-home. With a chic Scandinavian-inspired design and world-class technology, you'll experience an expedition cruise like no other.



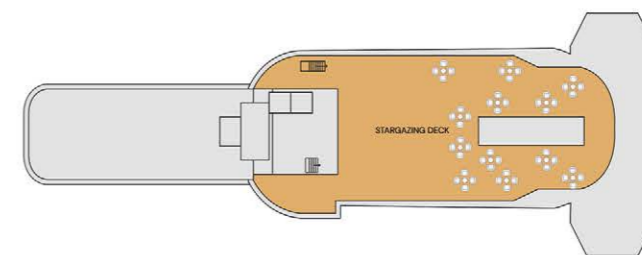
### Stateroom Category:

- Oceanview D4: 4 (19m<sup>2</sup>) ●
- Oceanview M4: 12 (19m<sup>2</sup>) ●
- Balcony D5: 8 (28m<sup>2</sup>) ●
- Balcony M5: 22 (28m<sup>2</sup>) ●
- Balcony D6: 24 (28m<sup>2</sup>) ●
- Suite: 4 (44m<sup>2</sup>) ●
- Premium Suite: 2 (49m<sup>2</sup>) ●

### Ship Specification:

- Guest Capacity 152
- Staff 120
- No. of Decks 9
- Staterooms 76
- Length 371ft (113m)
- Breadth 75ft (23m)
- Tonnage 10,500
- Cruising Speed 15.5 knots
- 3rd Guest Capacity ▲
- 4th Guest Capacity ■
- Connecting Staterooms ↔
- Wheelchair Accessible Staterooms ♿ 415
- Propulsion Hybrid Diesel  
Electric, Polar  
Class PC5
- Registered Panama
- Lifeboats 2
- Zodiacs 11 MK V  
2 MK VI

SH Vega aerial view



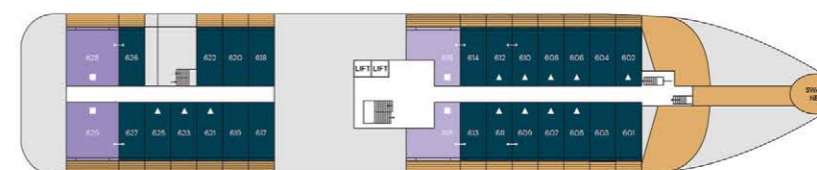
**Deck 9**  
Stargazing Deck



**Deck 8**  
Gym  
Sauna  
Jacuzzi  
Spa  
Bridge



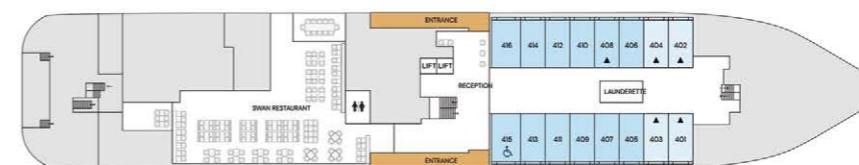
**Deck 7**  
Shop  
Swimming Pool  
Pool Bar & Grill  
Club Lounge  
Observation Lounge



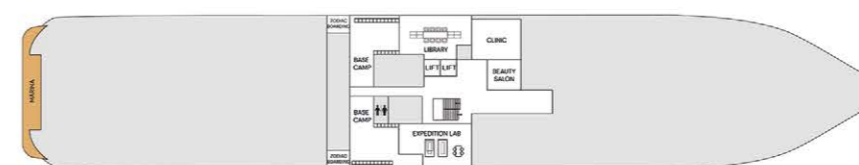
**Deck 6**  
Premium Suites  
Suites  
Balcony Staterooms D6  
Swan's Nest



**Deck 5**  
Balcony Staterooms D5, M5  
Suites



**Deck 4**  
Reception  
Laundrette  
Swan Restaurant  
Oceanview Staterooms D4, M4



**Deck 3**  
Clinic  
Library  
Basecamp  
Beauty Salon  
Expedition Lab

# SH Diana

The largest 5-star ship in our fleet, SH Diana (named after the Roman goddess of light, the moon, hunting and the wilderness) is elegant, spacious and built to explore the Mediterranean's famous sites of antiquity and beyond.



The Swan's Nest, on board SH Diana

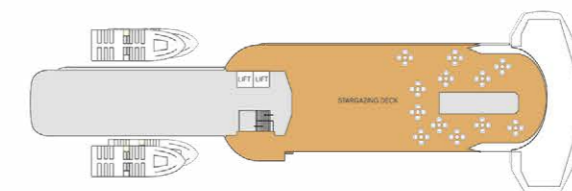
**Stateroom Category:**

- Oceanview: 20 (20m<sup>2</sup>) ●
- Balcony: 66 (28m<sup>2</sup>) ●
- Junior Suite: 4 (35m<sup>2</sup>) ●
- Suite: 4 (44m<sup>2</sup>) ●
- Premium Suite: 2 (47m<sup>2</sup>) ●

**Ship Specification:**

- Guest Capacity: 192
- Staff: 141
- No. of Decks: 9
- Staterooms: 96
- Length: 410 ft (125m)
- Breadth: 75 ft (23m)
- Tonnage: 12,100 GRT
- Cruising Speed: 14.5 knots
- Propulsion: Hybrid Diesel Electric, Polar Class PC6
- Registered: Malta
- Lifeboats: 2
- Tender: 2
- Zodiacs: 13 MK V, 2 MK VI

Accessible Staterooms: 419 (Deck 4), 635 (Deck 6)



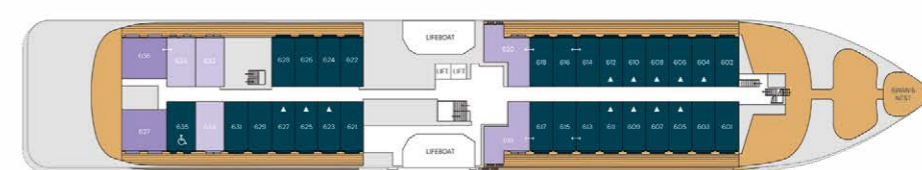
**Deck 9**  
Stargazing Deck



**Deck 8**  
Gym  
Sauna  
Jacuzzi  
Spa  
Beauty Salon  
Bridge



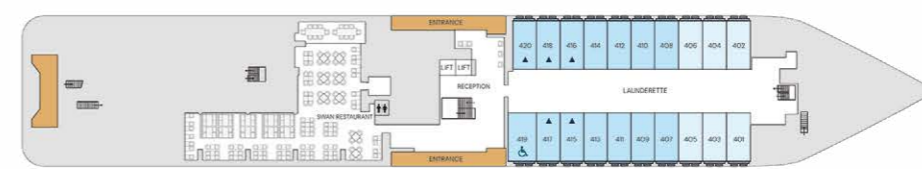
**Deck 7**  
Swimming Pool  
Pool Bar & Grill  
Club Lounge  
Card Room  
Observation Lounge



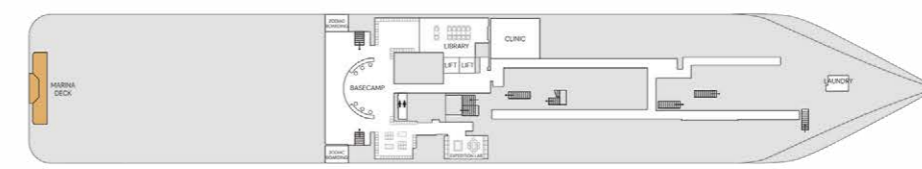
**Deck 6**  
Premium Suites  
Suites  
Junior Suites  
Balcony Staterooms  
Swan's Nest



**Deck 5**  
Balcony Staterooms  
Junior Suites  
Suites



**Deck 4**  
Swan Restaurant  
Reception  
Oceanview Staterooms  
Launderette



**Deck 3**  
Marina Deck  
Zodiac Boarding  
Basecamp  
Library  
Expedition Lab  
Clinic  
Laundry

# Your home away from home

Relax in the understated elegance of your stateroom or suite. A sophisticated blend of muted tones, natural textures and intuitive technology, the Scandi-inspired design seamlessly blends the natural world with 5-star comforts. The variety of lighting options and crackling holographic fire offer the perfect option for cozy evenings, and the floor to ceiling windows and balcony doors ensure that no sunset or surprise sighting goes unmissed.

## Your perfect space

Each of our beautifully designed staterooms has everything you need for a pampered stay. Fluffy dressing gowns, spacious dressing and seating areas and ample storage, as well as a well-stocked minibar and a personal safe. The desk in your room is the perfect place to plan the next day's adventures, and you won't miss a wildlife sighting with your Nikon telescope. Glass-enclosed rain showers with luxury personal care products transform your ensuite into a personal spa.



Onboard stateroom suite. Suite sizes and categories vary by ship

### Amenities in your cabin

- Welcome Champagne bottle
- Snacks
- Stocked minibar with soft drinks and beer
- Illy Espresso coffee machine with coffee pads
- Tea Kettle and Kusmi tea bags
- TV service
- Free Wi-fi connection, subject to satellite reception
- Hair dryer
- Towels for cabin, swimming pool and gym
- Bathrobe
- Bedroom slippers
- High quality toiletries by Lajatica, custom made for our selection onboard. These include hand soap, shower gel, shampoo, conditioner and body lotion.



**Premium Suite**  
49m<sup>2</sup> (528ft<sup>2</sup>) | Sleeps 4

Premium Suites feature a king size bed and separate living room with a soothing, flame-effect fireplace, a luxurious ensuite bathroom with separate bath tub and walk-in shower, a spacious walk-in wardrobe and a 12m<sup>2</sup> (129ft<sup>2</sup>) private balcony.



**Suite**  
44m<sup>2</sup> (474ft<sup>2</sup>) | Sleeps 4

Suites feature a king size bed and separate living room with a soothing flame-effect fireplace, a luxurious ensuite bathroom with separate bath tub and walk-in shower and a 12m<sup>2</sup> (129ft<sup>2</sup>) private balcony.



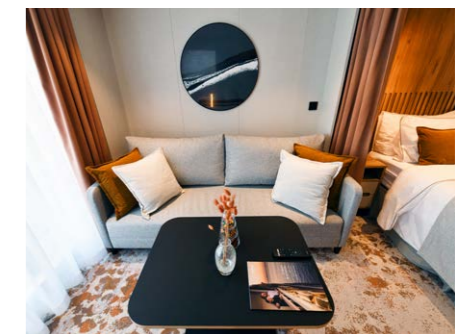
**Junior Suite (only on SH Diana)**  
35m<sup>2</sup> (377ft<sup>2</sup>) | Sleeps 2/3

Features a king size bed, separate living room area with homely flame-effect fireplace, private kitchen, luxurious en-suite bathroom and a 7 sq. m private balcony.



**Balcony**  
28m<sup>2</sup> (302ft<sup>2</sup>) | Sleeps 2/3

Balcony Staterooms feature two single beds or a double bed bedroom with living room area, a luxurious bathroom and your own private 6m<sup>2</sup> (65ft<sup>2</sup>) balcony.



**Oceanview**  
19m<sup>2</sup> (205ft<sup>2</sup>) | Sleeps 2

Oceanview Staterooms feature two single beds or a double bed with living room area and a luxurious bathroom.

# SH Vega


Named after the first ship to cross the Arctic Northeast Passage, this 5 star elegant 'Scandi-design' boutique ship leaves nothing to be desired. The perfect way to explore the world, from the Arctic and Iceland to Africa and South America.



**DISKO BAY**  
Various whales roam the waters of the bay in springtime, including bowheads, humpbacks and narwhals.



**ÎLES DU SALUT**  
Of volcanic origin, the 'Islands of Salvation' boast a distinctive blend of mixed-Creole and indigenous culture.



**ABROLHOS ARCHIPELAGO**  
Charles Darwin explored these diversely populated islands, and their extensive reefs have caused many shipwrecks.



**SOUTH SHETLAND ISLANDS**  
Slightly warmer than Antarctica, these islands showcase unique flora and fauna when explored via Zodiac.



**GRIMSEY ISLAND**  
With a human-to-bird ratio of 1:10,000, Grimsey is perfect for puffin-spotting in summer.



**SVALBARD**  
Get up-close-and-personal with one of the Arctic's most varied polar landscapes – home to 3,000 polar bears.



**BIJAGOS ARCHIPELAGO**  
A tropical paradise off Guinea-Bissau's coast with pristine beaches, lush mangroves and vibrant marine life.



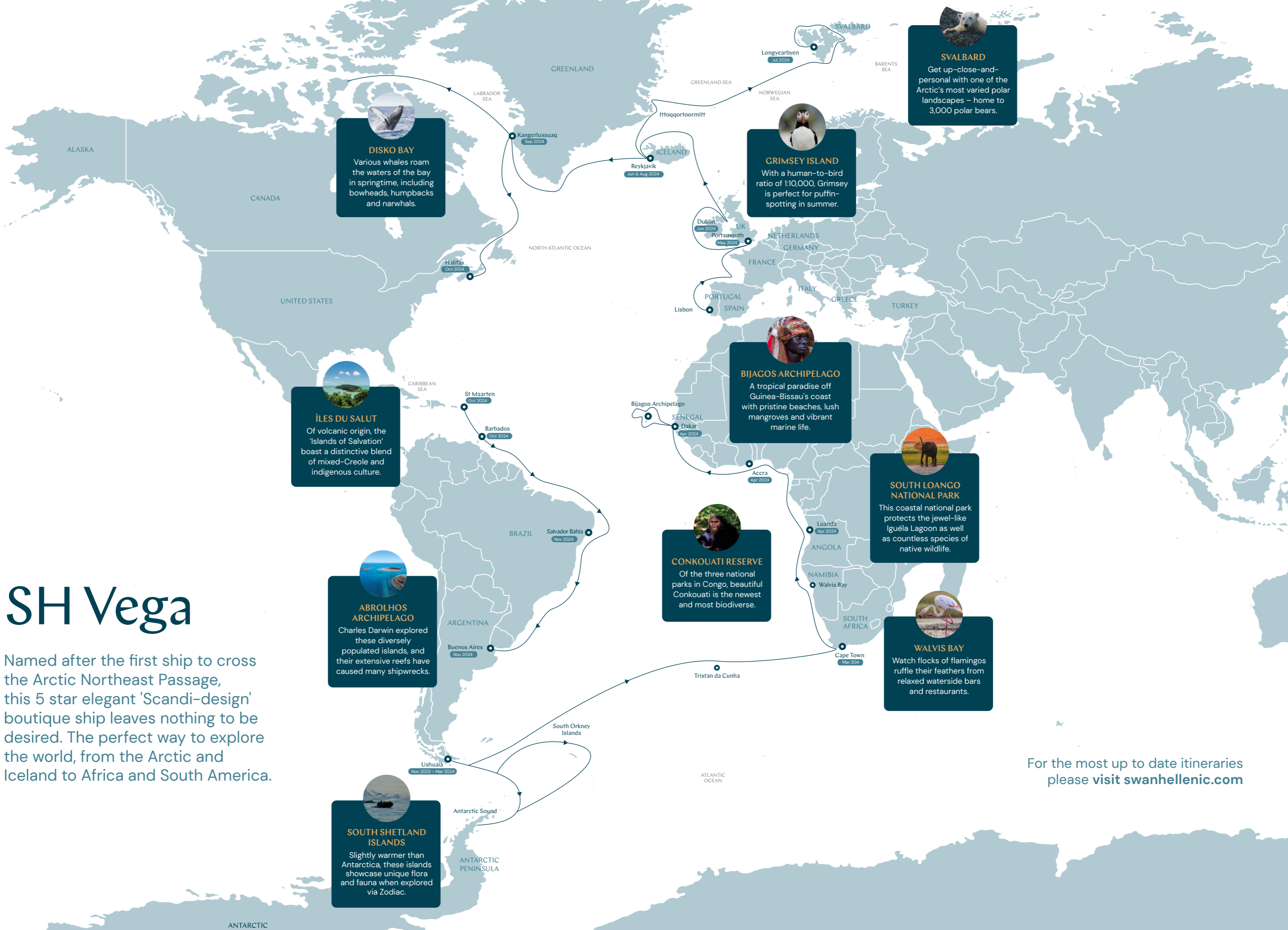
**CONKOUATI RESERVE**  
Of the three national parks in Congo, beautiful Conkouati is the newest and most biodiverse.



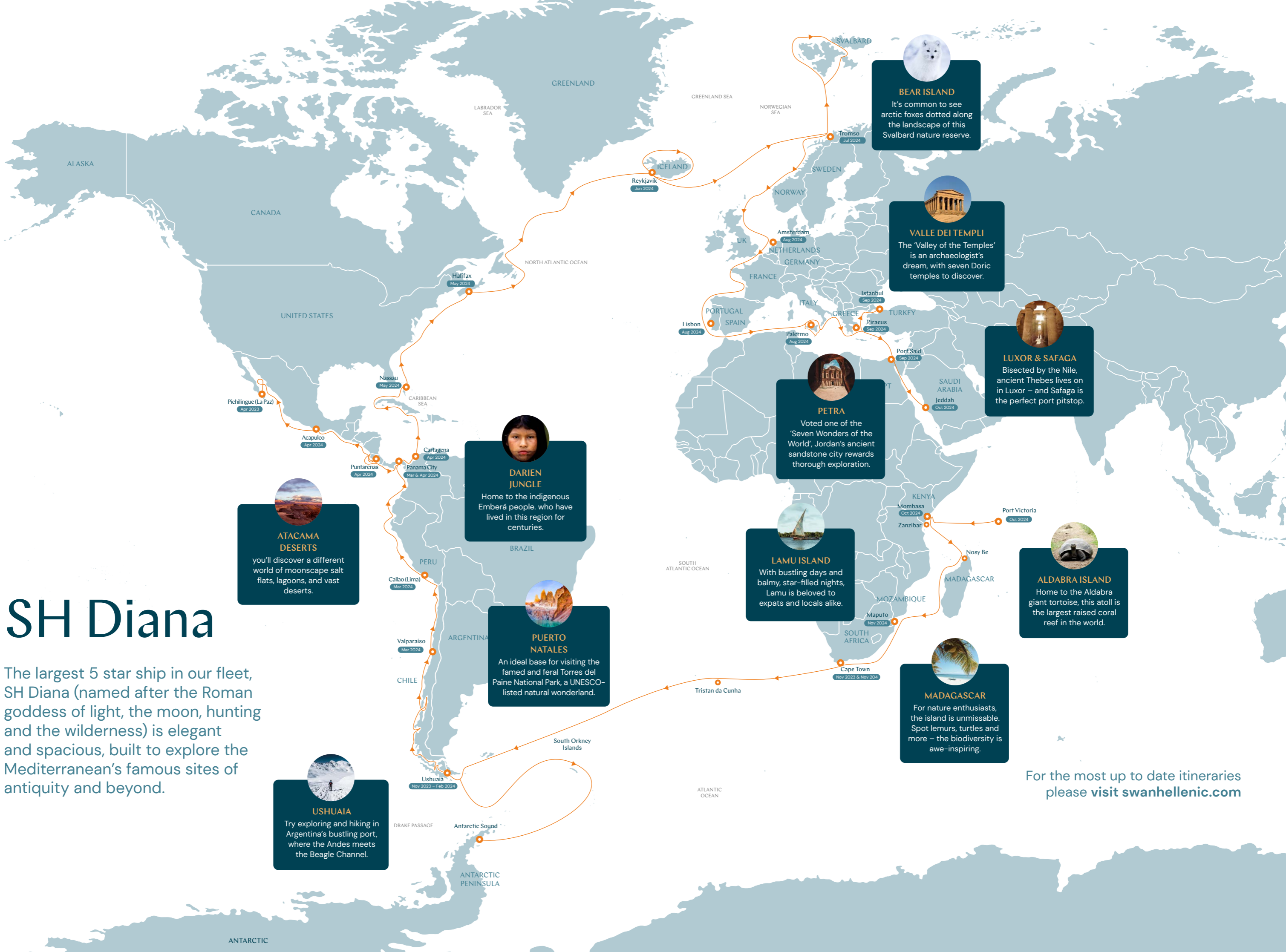
**SOUTH LOANGO NATIONAL PARK**  
This coastal national park protects the jewel-like Iguéla Lagoon as well as countless species of native wildlife.



**WALVIS BAY**  
Watch flocks of flamingos ruffle their feathers from relaxed waterside bars and restaurants.



For the most up to date itineraries please visit [swanhellenic.com](http://swanhellenic.com)



# SH Diana

The largest 5 star ship in our fleet, SH Diana (named after the Roman goddess of light, the moon, hunting and the wilderness) is elegant and spacious, built to explore the Mediterranean's famous sites of antiquity and beyond.

For the most up to date itineraries please visit [swanhellenic.com](http://swanhellenic.com)

# Book your cultural expedition cruise

The long and deep cultural history of the Mediterranean has been fascinating intrepid Swan Hellenic guests for over a century. Follow in the footsteps of the curious explorers that came before you on an extraordinary voyage back to where it all began.



Thanks for embracing  
our travel philosophy